

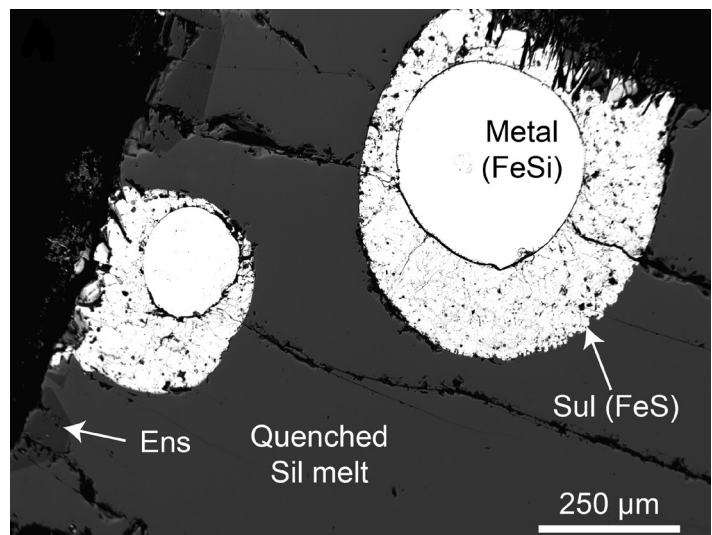
Geowissenschaftliches Kolloquium

Mantle sources and the origin of high sulfur contents of lavas on Mercury

Donnerstag, 12. Mai 2016 - 16.15 Uhr

Olivier Namur
(Universität Hannover)

This talk will investigate the geochemical data of Mercury as measured by the MESSENGER spacecraft. I will first describe the structure of the planet and the geochemistry of the crust. I will then present results from experiments at high-temperature and low- to high-pressure to discuss the conditions of melting in the Mercurian mantle. I will finally discuss the sulfur solubility in silicate melts, the sulfur content of the Mercurian mantle and the structure of the metallic core.



I am graduated and I received my PhD from the University of Liege (Belgium). I've been postdoctoral researcher at the University of Cambridge (UK) and the University of Hannover (Germany). My research interests are magma chamber processes in layered intrusions and planetary sciences. I will stay in Hannover for 5 years where I will be leading an Emmy Noether Research group.



Layout: FUB GeoPal Medienbüro, Jan Evers 20160420

Institut für Geologische Wissenschaften

Großer Hörsaal (C.011), Haus C
Malteserstrasse 74-100
12249 Berlin

