

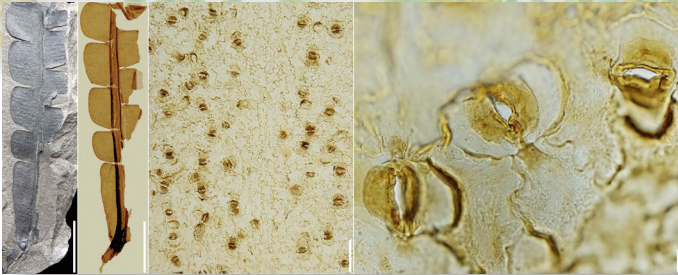
Geowissenschaftliches Kolloquium

The strange Bennettitales - a key Mesozoic group of seed plants

Donnerstag, 16. Mai 2019 - 16.15 Uhr

Christian Pott

LWL-Museum für Naturkunde Münster



Bennettitales are a lineage of extinct, enigmatic seed plants with cycad-like foliage but flower-like reproductive organs; they clearly host a suite of characters that gives them a central role in understanding seed-

plant phylogeny and the origin and evolution of the angiosperms. The origin of the Bennettitales is still obscure; their decline is most probably connected to the rise of the rapidly radiating angiosperms resulting in suppression, refugial retreat or extinction of major gymnosperm groups.



Christian Pott obtained his PhD in Palaeobotany at the University of Münster with a study involving cuticular analysis of compression plant fossils from a Triassic flora of Austria. Since 2008, at the Swedish Museum of Natural History, Stockholm, and since 2017 at the LWL-Museum of Natural History, Münster, his focus encompasses the evolutionary history of the cycadophytes with emphasis on the Mesozoic Bennettitales.

Layout: FUB GeolPal Vanessa Skiba, 20190429

Institut für Geologische Wissenschaften

Großer Hörsaal (C.011), Haus C
Malteserstrasse 74-100
12249 Berlin



www.geo.fu-berlin.de/geol/kolloquium