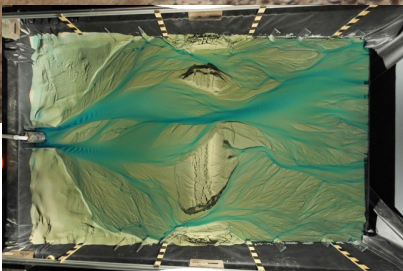


# Geowissenschaftliches Kolloquium

# *Links between channel migration, landsliding, and chemical weathering*

Donnerstag, 25. Oktober 2018 - 16.15 Uhr

Aaron Bufe  
GFZ Potsdam



The lateral migration of channels drives the erosion of uplifting landscapes, the formation of stratigraphy, and the reworking of sediment, nutrients, and carbon in fluvial deposits. Here, I explore the controls on lateral channel migration using a combination of results from sandbox experiments and a field study in the Tian Shan foreland. In addition, I discuss whether river valleys that are formed by lateral erosion can be used as topographic markers for the climatic and tectonic conditions that shape landscapes.



After receiving a B.A. and M.Sc. from the University of Cambridge, and a Ph.D. from the University of California, Santa Barbara, Aaron Bufe joined the GFZ in 2017 as a postdoctoral researcher. His research interests revolve around chemical and physical mass fluxes on Earth's surface. Recently, he has been working on the impact of physical erosion processes on chemical weathering.

Layout: FUB Geopal Vanessa Skiba, 20181002

**Institut für Geologische Wissenschaften**

Großer Hörsaal (C.011), Haus C  
Malteserstrasse 74-100  
12249 Berlin



[www.geo.fu-berlin.de/geom/kolloquium](http://www.geo.fu-berlin.de/geom/kolloquium)