

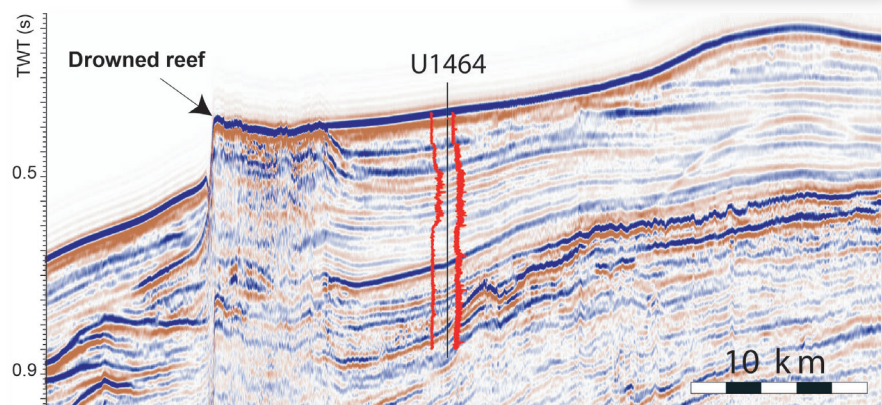
# Geowissenschaftliches Kolloquium

## A Miocene “Great Barrier Reef” on the North-West Shelf of Australia

Donnerstag, 22. Juni 2017 - 16.15 Uhr

**Lars Reuning**  
(RWTH Aachen)

Most of the North-West Shelf of Australia today hosts only limited coastal fringing reefs and atoll-like shelf edge reefs. Little is known that during the Miocene this shelf was lined by a reef system rivaling in size the modern Great Barrier Reef. The development of this reef system from its initiation to its final demise at the Miocene/Pliocene boundary is closely coupled to major climatic and tectonic changes. Its history will be outlined based on seismic and core data from IODP Expedition 356.



**Dr. Lars Reuning** worked at the GEOMAR Centre for Ocean Research and received a Ph.D. from the University of Kiel. Subsequently, he joined RWTH Aachen University where he is currently working as senior lecturer for sedimentology. His main research interests are 3D seismic geometries in carbonates, carbonate diagenesis and carbonate-evaporate interactions.

Layout: FUB GeoPal Vanessa Skiba, 20170518

**Institut für Geologische Wissenschaften**

Großer Hörsaal (C.011), Haus C  
Malteserstrasse 74-100  
12249 Berlin

