

Geowissenschaftliches Kolloquium

Living and fossil coral reefs from Australia and what they can tell us about sea level history

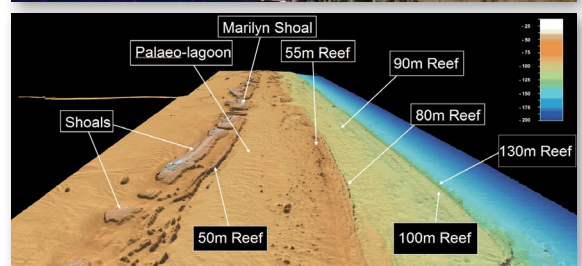
Donnerstag, 15. Oktober 2015 - 16.15 Uhr

Russell Kelley

(Adjunct Senior Lecturer, College of Marine and Environmental sciences, James Cook University - Australia)

The massive limestone structures of atolls and coral reefs are largely built by tiny coral polyp animals. Despite being cemented to the seafloor corals have been incredibly successful in building reefs amid the drifting continents, changing climates and sea levels of earth history. In this talk author, geologist and science communicator Russell Kelley uses video, animation and rich images to explain how living and fossil reefs have been used to develop a sea-level curve for the last 500.000 years.

Russell Kelley was educated at Queensland University and is a science communication consultant with a special interest in coral reef subject matter. His outputs include scientific papers, book chapters, educational tools and international broadcast television productions. He is the author of the Indo Pacific Coral Finder and the Reef Finder - the world's first searchable, problem solving, underwater smart-guides.



Layout: FUB Geopal Medienbüro, Jan Evers 2015-008

Institut für Geologische Wissenschaften

Großer Hörsaal (C.011), Haus C
Malteserstrasse 74-100
12249 Berlin

